



E-MTB
ELECTRIC MOTION

EPURE TRIAL MODELS



NEW FEATURES EPURE 2020



FRAME

Initially developed for competition, Electric Motion chooses to provide its standard model with a high-end frame made of 15CDV6 steel tubes and micro fused pieces in 25CD4S. The frame itself weighs less than 5kg. All conditions are there to live a breathtaking experience

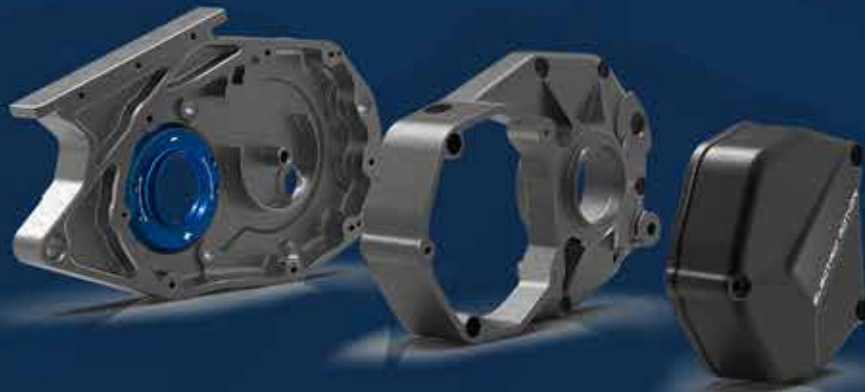
BATTERY

The new Electric Motion battery pack is more efficient than ever. Its new, last generation BMS (Battery Management System) guarantees the best performance in use and in time. The new battery pack is more compact, lighter, removable and has a 30% longer operating life. It will make you wonder who will be exhausted first: your battery or yourself.



DESIGN

The art of distinguishing itself, with a line and completely new colors, the Epure is more daring and elegant. With clean details and an original line cut with a scalpel, you have understood the Epure heals his style, his signature.



DIAPHRAGM CLUTCH

(On Epure Race)

The Epure Race model is equipped with a diaphragm clutch with a hydraulic control, made for competition. The engine flywheel coupled with a set of different balancing weights allows several inertia settings.

Essential system for the high-level competitors, here is what will make them clear the highest obstacles, with a perfect control.

FORK

(On Epure Sport and Epure Race)

It is one of the most performing forks on the market. This new generation fork, extra-light (weighing 1.5kg less), from the brand M4 Racing Part, has already been tested and approved by the best ...

The M4 Racing Part fork is equipped with new extra light CNC triple clamps.



ERGONOMICS AND TECHNOLOGIES

The new cockpit gives you all the information you need with only the blink of an eye. Ergonomic map control, remaining battery life on display (in %) for even more riding comfort.



EPURE LITE 2020

The Epure Lite is the standard model of the Epure family, but it does benefit of all its technology.

The Lite is good for all those who want to practice trial or ride off-road, with a silent motorbike that requires zero maintenance.

Private individuals, training schools or off-road centers, the Epure Lite will please a large crowd of enthusiasts.



MAX SPEED

65 KM/H

RANGE

43 KM

WEIGHT

73 KG

TORQUE

600 NM

ROAD LEGAL

125 CM³



TECHNICAL SHEET

FRAME	15CDV6
FRONT BRAKES	Brake disc 182 mm 4 pistons
REAR BRAKES	Brake disc 150 mm 2 pistons
FRONT RIM	Morad Trial 1.6"x21
REAR RIM	Morad Trial 2.15"x18
TIRES	Michelin X11
FRONT SUSPENSIONS	Tech
FRONT SUSPENSION TRAVEL	175 mm
REAR SUSPENSION	R16V
REAR SUSPENSION TRAVEL	170 mm

BATTERY

ENERGY	Li-ion
VOLTAGE	50,4 V
CAPACITY	1875 Wh
WEIGHT	10,5 kg
CHARGER	15 A
CHARGING TIME	3h20
LIFE CYCLE	1000
MINI CHARGING TEMPERATURE	0°C

ENGINE

NOMINAL POWER	6 Kw
PEAK POWER	11 Kw

DIMENSIONS

SEAT WEIGHT	670 mm
WHEEL BASE	1325 mm
GROUND CLEARANCE	320 mm
FOOTREST HEIGHT	360 mm
WIDTH	825 mm

SERIES EQUIPMENT

MAPS	3
------	---

OPTIONS

OPTIONS	PRB / PELS Trial training maps Flywheel Charger 25A (2h15)
---------	---

EPURE SPORT 2020

Designed for competitors, the Epure Sport is pure performance...

Power, battery lifetime, torque, speed, weight... the Sport model has never been that improved before.

The Epure Sport proves that an electric motorcycle can be as performing as the best combustion-powered ones. Without any compromise.



MAX SPEED

65 KM/H

RANGE

43 KM

WEIGHT

70 KG

TORQUE

600 NM

ROAD LEGAL

125 CM³



TECHNICAL SHEET

FRAME	15CDV6
FRONT BRAKES	Brake disc 182 mm 4 pistons
REAR BRAKES	Brake disc 150 mm 2 pistons
FRONT RIM	Morad Trial 1.6"x21
REAR RIM	Morad Trial 2.15"x18
TIRES	Michelin X11
FRONT SUSPENSIONS	M4
FRONT SUSPENSION TRAVEL	175 mm
REAR SUSPENSION	R16V
REAR SUSPENSION TRAVEL	170 mm

BATTERY

ENERGY	Li-ion
VOLTAGE	50,4 V
CAPACITY	1875 Wh
WEIGHT	10.5 kg
CHARGER	15 A
CHARGING TIME	3h20
LIFE CYCLE	1000
MINI CHARGING TEMPERATURE	0°C

ENGINE

NOMINAL POWER	6 Kw
PEAK POWER	11 Kw

DIMENSIONS

SEAT WEIGHT	670 mm
WHEEL BASE	1325 mm
GROUND CLEARANCE	320 mm
FOOTREST HEIGHT	360 mm
WIDTH	825 mm

SERIES EQUIPMENT

MAPS	3
PELS / PRB	Yes

OPTIONS

OPTIONS	LED kit
	Trial training maps
	Flywheel
	Charger 25A (2h15)

EPURE RACE 2020

This is the first homologated electric trial motorcycle ever sold equipped with a diaphragm clutch. Imagine one of the lightest trial motorcycles on the market, add the torque of an electric powertrain and finally a high performance diaphragm clutch...

The Epure Race has no limit... except for its pilot's.



MAX SPEED

65 KM/H

RANGE

43 KM

WEIGHT

72 KG

TORQUE

600 NM

ROAD LEGAL

125 CM³



TECHNICAL SHEET

FRAME	15CDV6
FRONT BRAKES	Brake disc 182 mm 4 pistons
REAR BRAKES	Brake disc 150 mm 2 pistons
FRONT RIM	Morad Trial 1.6"x21
REAR RIM	Morad Trial 2.15"x18
TIRES	Michelin X11
FRONT SUSPENSIONS	M4
FRONT SUSPENSION TRAVEL	175 mm
REAR SUSPENSION	R16V
REAR SUSPENSION TRAVEL	170 mm

BATTERY

ENERGY	Li-ion
VOLTAGE	50,4 V
CAPACITY	1875 Wh
WEIGHT	10.5 kg
CHARGER	15 A
CHARGING TIME	3h20
LIFE CYCLE	1000
MINI CHARGING TEMPERATURE	0°C

ENGINE

NOMINAL POWER	6 Kw
PEAK POWER	11 Kw

DIMENSIONS

SEAT WEIGHT	670 mm
WHEEL BASE	1325 mm
GROUND CLEARANCE	320 mm
FOOTREST HEIGHT	360 mm
WIDTH	825 mm

SERIES EQUIPMENT

SERIES EQUIPMENT	Hydraulic controlled diaphragm clutch Flywheel
------------------	---

OPTIONS

OPTIONS	LED kit Trial training maps Charger 25A (2h15)
---------	--

FUTURE IS ON



